

VRF OUTDOOR UNITS

AMV Mini

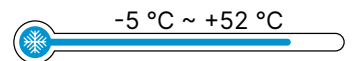


Cooling capacity	8-16 kW
Heating capacity	9-18 kW
Maximum drive indoor units number	4-9

System operation temperature range Heating:



Cooling:



AMV Slim



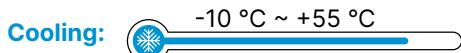
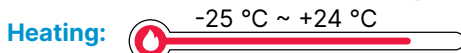
Cooling capacity	22,4-33,5 kW
Heating capacity	24-35 kW
Maximum drive indoor units number	13-19

AMV6 Heat Recovery



Cooling capacity	22,4-246 kW
Heating capacity	25-276 kW
Maximum drive indoor units number	13-80

System operation temperature range Heating:

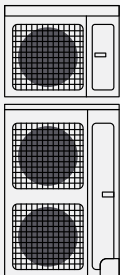
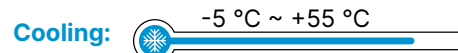
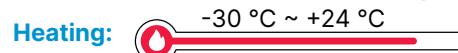


AMV6 Basic



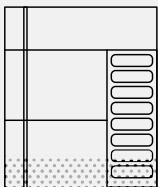
Cooling capacity	22,4-246 kW
Heating capacity	25-276 kW
Maximum drive indoor units number	13-80

System operation temperature range Heating:



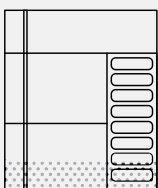
AMV MINI AND SLIM

- » All DC inverter compressor is used in this system. It can directly intake gas to reduce loss of overheat and improve efficiency.
- » High-efficiency PFC control technology is adopted with efficiency improved by about 1 % compared with conventional PFC. For air conditioner with rated power of 5 kW, 50 W of electricity can be saved every hour and 1,2 kW of electricity can be saved every day.
- » Easy Installation: The outdoor unit of AMV is with small size and light weight. No need fork lifter and crane for movement and installation. It can be carried by elevator or stairs.



AMV 6- BASIC

- » The system does not require an oil balance pipe
- » Operating in heating mode up to -30°C. in Cooling up to 55°C
- » Outdoor unit condensers are coated with GoldenFin which is made of Al-Mn anti - rust alloy, and coated with golden protection layer, it consists of epoxy resin & modified acrylic, silicon free. The anti corrosive performance is more than 200 % higher than blue fin.



AMV 6- HEAT RECOVERY

- » The AMV HR 3-pipe system can be used to simultaneously cool and heat rooms and provide hot water or connect to an underfloor heating circuit
- » Operating range. for heat recovery units up to -25°C in heating mode, and up to 55°C in Cooling mode.
- » Low power standby function can be achieved for more energy savings;

VRF SYSTEM INDOOR UNITS

AMV compact cassette



Cooling capacity	1,5-5,6 kW
Heating capacity	1,8-6,6 kW
Sound pressure level	25-43 dB(A)

AMV cassette



Cooling capacity	7,1-14 kW
Heating capacity	8-16 kW
Sound pressure level	31-43 dB(A)

Duct type unit



Cooling capacity	2,2-28 kW
Heating capacity	2,5-31 kW
Sound pressure level	22-55 dB(A)

Wall-mounted unit



Cooling capacity	1,5-9,5 kW
Heating capacity	1,8-10,5 kW
Sound pressure level	25-43 dB(A)

Floor-ceiling type unit



Cooling capacity	2,8-14 kW
Heating capacity	3,2-16 kW
Sound pressure level	29-49 dB(A)

AHU kit



Cooling capacity	7,1-252 kW
Heating capacity	8-283,5 kW
Sound pressure level	-

- *Ultra-low* noise operation. DC inverter motor can realize stepless speed regulation to lower noise. Indoor unit can be set to work under auto quiet mode via wired controller
- Quiet design high-efficiency cross flow blade and imported silence valve are adopted, which greatly reduce the noise of entire unit.
- *I-feel* function. When I-feel function is activated, the unit can detect the temperature around the user and adjust the temperature, so that the comfort of user is improved.

All cassette and wall-mounted indoor units are supplied with wireless YAP1F controller.

Can be switched in auto, cooling, dehumidifying, fan and heating operation modes;
Available functions: child lock, drying, health, ventilation, turbo, sleep, light, absence, I-feel and timer;



All ducted type indoor units and AHU kit units are supplied with wired XK46 controller.

Mostly of wired controller can control up to 16 same type units. Also it could be connected two controllers for one unit to have control from different places.
All type VRF units could be connected to BMS control system using Modbus or BACnet gateways.

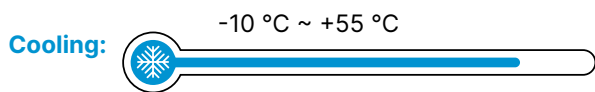
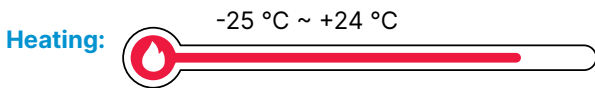


For VRF systems, up to 80 IDU, we could offer a **WIFI module** for controlling indoor units via Smart APP.



ASAMI AMV6 HR HEAT RECOVERY

Asami New Generation AMV6 HeatRecovery Inverter Multi VRF System adopts the world-leading multi VRF CAN+ communication technology, low power consumption standby technology, intelligent and efficient control and other innovative technologies. It can realize cooling, heating, water heating at the same time, which provides comprehensive solution for the multiple demands of customer for air conditioning, DHW and floor heating.

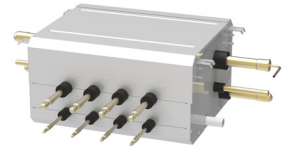


Heat boxes available to connect with water tank and floor coils, and meet the multiple demands of customer for air conditioning, DHW and floor heating. There are 2 sizes – 16kW and 30kW for different project requirements.



Heat recovery system use a Mode exchange boxes, to which up to 8 differently functioning zones or up to 64 indoor units can be connected

MODEL	NCHS1D	NCHS2D	NCHS4D	NCHS8D
Maximum numbers of connectable IDUs	8	16	32	64
Sound pressure dB)	38	39	43	44



Advantages

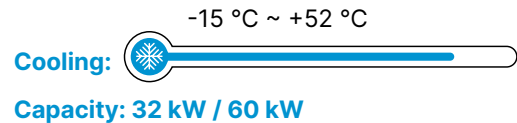
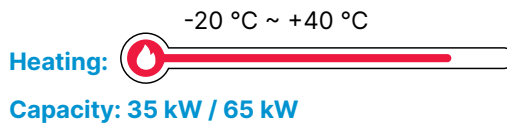
- New generation intelligent defrosting: self-adaptive capacity according to system load, pressure and temperature.
- Multiple Functions in One Unit: This unit can perform air cooling, air heating, and water heating simultaneously, satisfying customers' various needs for air conditioning, hot water and floor heating. It is a comprehensive solution for customers.
- Continuous Heating: AMV6 HR is designed with a continuous heating system. In case of modular combination, different modules can defrost in turn to reduce indoor temperature fluctuation, which will further improve the level of heating comfort.
- High Energy Efficiency: AMV6 HR system enables multiple operation modes for meeting various needs of users. Among them, mainly cooling, mainly heating and fully heat recovery modes include heat recovery function. Under the heat recovery mode, the system can directly offer the cooling capacity absorbed at the heating side to the cooling side for reducing outdoor unit's capacity output to greatly improve the energy-saving effect.

MODULAR INVERTER HEAT PUMP

with inverter rotary compressor



Operation range:



ENVIRONMENTALLY RESPONSIBLE REFRIGERANT

The Modular Inverter Heat Pump use R32 refrigerant, which has a Global Warming Potential Coefficient 675.



MODULAR COMBINATION DESIGN

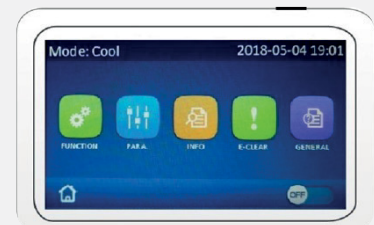
The modular combination design allows a maximum of 16 modular units as a cascade working with the same or different cooling capacities, so the total cooling capacity range is between 32kW and 1040kW.

CONTINUOUS HEATING

In a cascade operation, modules go into defrost cycle at different time interval, ensuring Continuous Heating function.

CONTROLLER XE73-25/G

This advanced touch screen controller gives easy operation, selection of many languages, possibility to control up to 16 modules in cascade, circulation pump work, and standard Modbus RS485 communication interface.



DC INVERTER ROTARY COMPRESSOR

Adopted with inverter rotary compressor, each with adjustable capacity range is from 10% to 100%. With DC inverter technology, the compressor operation frequency is in dynamic control to satisfy load changes, thus ensure highly efficient system for customers with an optimal performance.



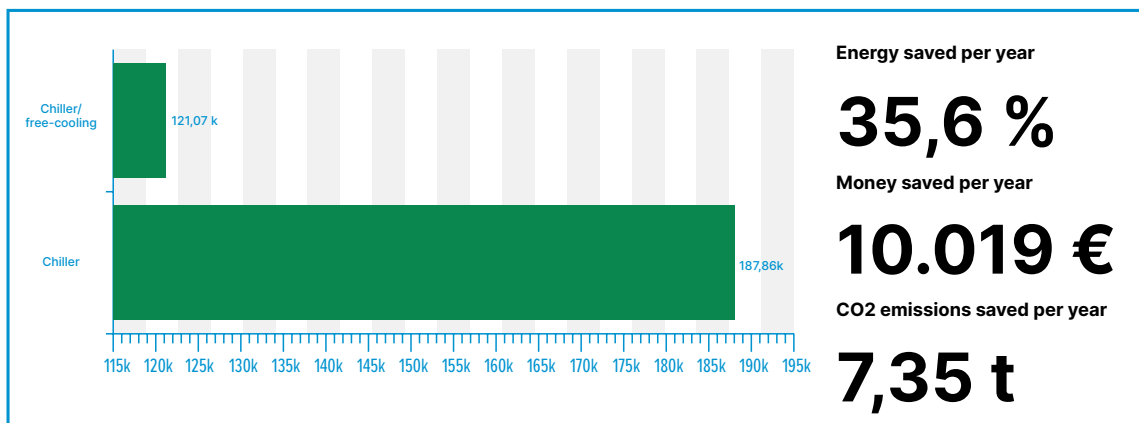
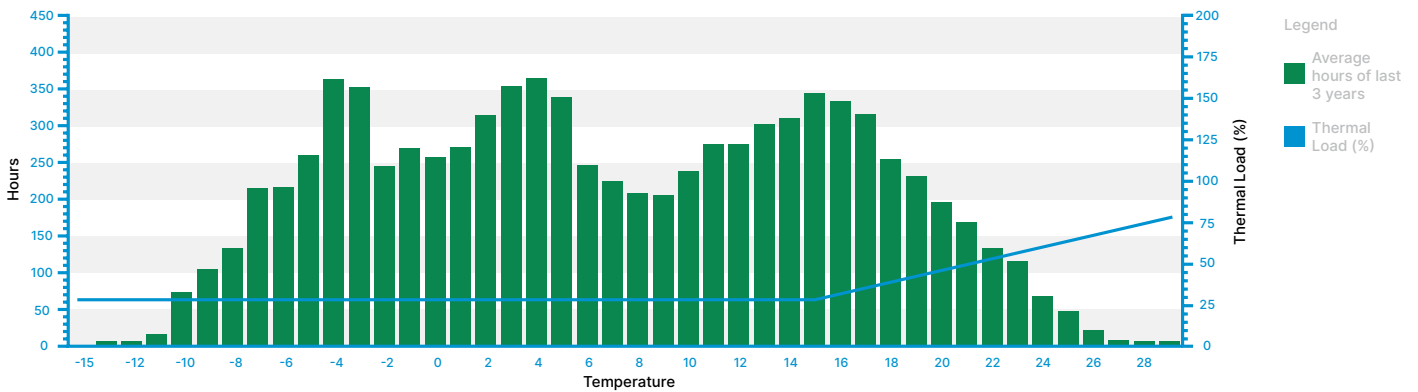
THE MODULAR FREE-COOLERS

FC4TAE | FC4ALL

Free Cooling modules for air conditioning systems offers significant energy savings and increased efficiency compared to traditional air conditioning systems. Free Cooling modules use the outside air temperature to cool the building's interior, reducing the need for mechanical cooling.

Using separate Free Cooling modules also provides greater flexibility in air conditioning system design. They can be installed in existing systems, making it easier to upgrade or modify the system as needed.

Moreover, Free Cooling modules are environmentally friendly. They also reduce the carbon footprint of the building by decreasing energy consumption.



***calculations are made for air conditioning system, with following parameters:**

- used 0,15 € / kWh average cost of electricity,
- 52 working weeks in a year,
- 24 working hours in a day,
- 0.11 kg/kWh CO2 factor
- 7 working days in a week,

EQUIPMENT

Air cooled chillers



Capacity	5-1908 kW
Refrigerant	R410A/R454B/R513A
Hydromodule (option)	yes
Evaporator type	Plate/shell & tube
Operation temperature range	-20 °C ~ +48 °C



Water cooled chillers



Capacity	4-1499 kW
Refrigerant	R410A/R513A
Hydromodule (option)	yes
Evaporator type	Plate/shell & tube
Operation temperature range	-20 °C ~ +48 °C



Industrial chillers and heat pumps



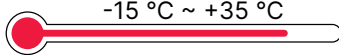
Capacity	1-195 kW
Refrigerant	R410A/R290/R449A
Hydromodule (option)	yes
Evaporator type	Plate/ shell & tube
Operation temperature range	-20 °C ~ +48 °C



Air cooled Heat pumps



Capacity	6-356kW
Refrigerant	R410A
Hydromodule (option)	yes
Evaporator type	Plate
Operation temperature range	-15 °C ~ +35 °C



Water cooled Heat pumps



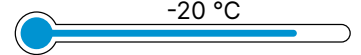
Capacity	5-1721 kW
Refrigerant	R410A/R513A
Hydromodule (option)	yes
Evaporator type	Plate/shell & tube
Operation temperature range	-25 °C ~ +35 °C



Free cooling modules



Capacity	18-407 kW
Refrigerant	-
Hydromodule (option)	-
Evaporator type	-
Operation temperature range	-20 °C



Advantages

- Professional industrial refrigeration equipment designed to operate at maximum capacity 365 days a year.
- Large condenser surface area and air flow to maintain maximum capacity in extreme weather conditions.
- The condenser uses copper tubes and aluminum plates to withstand the effects of the environment and is easy to repair in the event of a fault.
- A special range of TAEevo chillers can meet a wide range of industrial refrigeration needs.
- Stand-alone Freecooling modules are compatible with a variety of cooling equipment. An accurate payback calculator allows you to calculate the payback period of equipment.
- All components of MTA chillers are made in Europe.





**Skystar,
Skystar Jumbo**

Fan Coil units	Cassete
Cooling capacity	1,9 – 13,6 kW
Sound pressure level	24 – 55 dB(A)
EC fan (option)	yes
Modbus (option)	yes



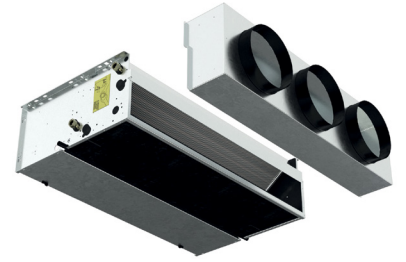
**Carisma
Fly**

Fan Coil units	Wall mounted type unit
Cooling capacity	0,6 – 3,8 kW
Sound pressure level	26 – 48 dB(A)
EC fan (option)	yes
Modbus (option)	yes



**Carisma
Whisper**

Fan Coil units	Floor-ceiling
Cooling capacity	0,9 – 3.8 kW
Sound pressure level	22 – 46 dB(A)
EC fan (option)	yes
Modbus (option)	yes



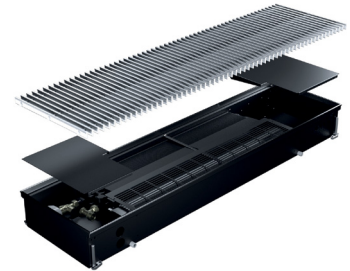
**Maestro,
Carisma CRSL**

Fan Coil units	Duct type unit
Cooling capacity	2,0 – 30,6 kW
Sound pressure level	25 – 72 dB(A)
EC fan (option)	yes
Modbus (option)	yes



**Carisma
CRC MV**

Fan Coil units	Floor-ceiling unit
Cooling capacity	1,0 – 7,4 kW
Sound pressure level	23 – 55 dB(A)
EC fan (option)	yes
Modbus (option)	yes



**Carisma
CFP ECM**

Fan Coil units	Floor type unit
Cooling capacity	1,0 – 6.3 kW
Sound pressure level	29 – 63 dB(A)
EC fan (option)	yes
Modbus (option)	yes



**Carisma
CRC IO**

Fan Coil units	Duct type unit
Cooling capacity	1,0 – 7,4 kW
Sound pressure level	23 – 55 dB(A)
EC fan (option)	yes
Modbus (option)	yes



**Carisma
Coanda**

Fan Coil units	Duct type unit
Cooling capacity	1,4 – 4,0 kW
Sound pressure level	26 – 46 dB(A)
EC fan (option)	yes
Modbus (option)	yes

FANCOIL CONTROL RANGE

WM-T



- Wall control with electronic thermostat
- Manual winter/summer changeover
- Electric heater control

T-MB2



- 2.4" color TFT graphic screen
- Equipped with a WiFi and BLE module for the management of the unit connected through the Sabiana APP

Advanced daily/weekly programming with 3 preset weekly programs

WM-KNX



- Wall control with LCD screen
- KNX communication protocol
- Designed to be installed in a installation box

RT03



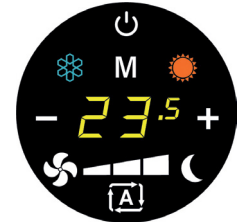
- Infrared remote control RT03 with thermostat
- To be used with MB electronic board only
- 24 hours ON/OFF program

T-DI



- T-DI multifunctional control panel with a 7" touch screen
- Read the info and control up to 60 units (SIOS or MB)
- Can be controlled remotely using the Sabiana Cloud

CB-Touch controller

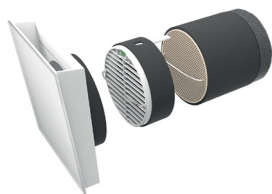


- Chassis-mounted touch control panel with electronic thermostat
- Bluetooth and Wi-Fi features allows control with the Sabiana Cloud WM" APP
- Regulation of LED brightness

Advantages

- One of the quietest fan coil units on the market.
- Fast production and delivery time.
- Fan coils with high efficiency EC fan motors are available.
- Low hydraulic resistance of heat exchangers.
- Wide range of options that can be supplied separately or together with the device.
- The equipment has a wide selection of control options - wireless, wall, central controllers, WiFi app, Modbus.
- Wide range of products - fan coils, radiant panels, floor convectors, air heaters.

HEAT RECOVERY UNITS



Energy Easy

Air flow	43-46m3/h
Max sound power level	42-43,7 dB(A)
Temperature efficiency	90-91%
Energy efficiency class	A, A+
Heat exchanger type	Ceramic
Options	<ul style="list-style-type: none"> ● Push control / Touch control ● Installation kit ● External air outlet



Energy Smart ceiling

Air flow	150-270m3/h
Max sound power level	36,8-44,9 dB(A)
Temperature efficiency	88-92,1%
Energy efficiency class	A, A+
Heat exchanger type	Plate PET/enthalpy plate
Options	<ul style="list-style-type: none"> ● Additional electric heater till -23C outdoor temperature ● KNX ● Wifi app



Energy Smart vertical

Air flow	180-600 m3/h
Max sound power level	38,9-52,4 dB(A)
Temperature efficiency	86,5-92,5%
Energy efficiency class	A, A+
Heat exchanger type	Plate PET/enthalpy plate
Options	<ul style="list-style-type: none"> ● Additional electric heater till -23C outdoor temperature ● KNX ● Wifi app



Advantages

- ◀ Using the SabWeb gateway give possibility to control heat recovery units via Sabiana Cloud App.
- Modulating integrated electric heater.
- Possibility to connect a CO2 sensor.
- A PET recuperator is more efficient than a metal one and can be used in rooms with high humidity. Plastic recuperators do not mold as much as enthalpy recuperators, which need to be replaced every 2 years.
- Polyester fiber insulation, heat transfer coefficient $\lambda=0.0035W/mK$.
- High class filters ePM1 55% - F7/ePM10 50% - M5.
- Fans with EC motors.
- The standard package includes a control panel and plastic duct connectors
- ◀ Touch control display

WE ALSO CAN OFFER OTHER SABIANA PRODUCTS:

Radiant panels

- Two series - Pulsar and Duck strip
- For cooling and heating
- Several versions for different hanging on the ceiling
- The wide range of colours available
- Each element can be easily connected by pressfittings or by welding the pipe



Industrial air heaters

- For cooling and heating
- A wide range with many options included EC fans, explosion-proof motors and etc.
- Several versions are intended for hanging on the ceiling or on the wall
- Air flow up to 12.000m³/h
- Heat outputs from 5 to 120kW
- Cooling capacities from 2 to 28kW



Electrostatic filters

- Installation possible on existing systems Low impact on the thermal and aeraulic equilibrium of the installation
- Significant bactericide action on biological pollutants
- Very low additional energy costs
- Simple and fast maintenance
- Remote power supply that can power multiple filtering units at the same time



Evaporative coolers

- Reduces the air temperature in large volume buildings
- Is using nature's principle of water evaporation
- Supplies continuous great air changes in large volume buildings, improving the internal air quality
- 3 sizes for air flow: 10.500m³/h, 11.000m³/h and 21.000m³/h



OTHER MANUFACTURERS



Humidifiers and water treatment systems



Close control conditioning and clean room solutions



Adsorptive air dehumidifiers



Water and freon cooling systems



Air cleaning and disinfection



Rooftop units



Gas heaters



www.asami.lt

Contacts

UAB ASAMI

Rygos str. 6-34, LT05270, Vilnius, Lithuania

+370 5 2636152

info@asami.lt

